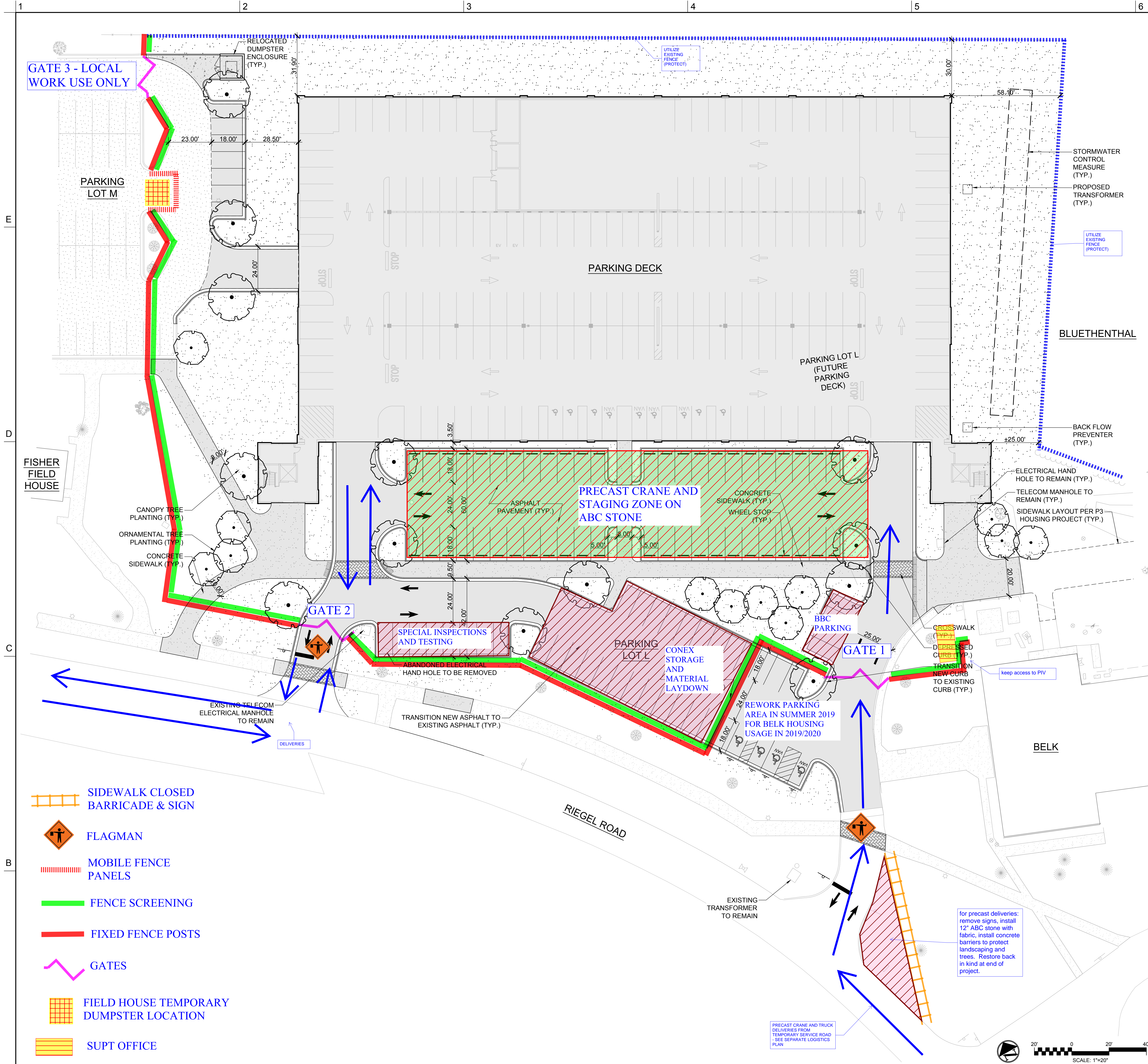


8/9/2018 4:18:18 PM
S:\4099\001080\Drawings\02-Conceptual\Preliminary Site Plan.dwg



PARKING DATA

EXISTING PARKING LOT M	186
EXISTING PARKING LOT L	236
TOTAL LOT M & L	422
PROPOSED PARKING LOT M	193
PROPOSED PARKING LOT L	89
PROPOSED PARKING DECK (5 STORY DECK)	1004
TOTAL LOT M, L AND DECK	1286
TOTAL NET INCREASE	864



University of North Carolina at Wilmington

Parking Deck 2
Public-Private Partnership
601 S College Rd, Wilmington, NC 28403

Balfour Beatty
Campus Solutions

Balfour Beatty
Construction

SCO# 00-00000-00B
DESIGNER

CLARK NEXSEN

1523 ELIZABETH AVENUE, SUITE 300
CHARLOTTE, NORTH CAROLINA 28204
704-377-8800

CLARK NEXSEN LICENSE NUMBER: C-1028



CIVIL ENGINEER
243 NORTH FRONT STREET
WILMINGTON, NORTH CAROLINA
28401
910.343.1048

PROFESSIONAL SEAL

SUBMITTAL

10 JAN 2019

PRELIMINARY

REVISIONS

KEY PLAN

PHASE 3
2019-2020 School
Year

August 21, 2019
THRU
May 10, 2020

SHEET

OVERALL SITE PLAN

DESIGN: TRC/BPD
DRAWN: TRC/BPD
REVIEW: RMC

2 NOTES

SCALE: 1" = 20'

1 LEGEND/NOTES

SCALE: NTS